

THE CAROLINAS' COURIER

INTERNATIONAL RIGHT OF WAY ASSOCIATION - CAROLINAS CHAPTER 31



Winter 2015

Volume 57, Issue 1

Letter from President Julie McDonald

Happy New Year!

Once again as we start a new calendar year, I want to look back over 2014 and reflect on what a great year this has been for the Chapter. This past year, we covered the two states by holding events in Waynesville, NC at the Waynesville Inn, Ripley's Aquarium in Myrtle Beach, SC, the US National Whitewater Center in Charlotte, NC and the Charleston Harbor Resort & Marina in Charleston, SC. These events were put on with a lot of hard work and collaboration by the leadership team as well as a ton of support from all our sponsors. I want to say a special thanks to our corporate sponsors for being such amazing supporters of our Chapter, you are one of the biggest reasons this Chapter has been so successful in the last year. I also want to thank all the chapter members and especially the chapter leadership, who have given of their time this year to serve, your commitment to the Chapter and its growth is very much appreciated. I want to send out a heartfelt thanks to Al Oswald for once again putting on the best low country boil ever known to the IRWA. We also hosted the Region 6 Fall Forum in Charleston and enjoyed having all the Chapter leadership from across the southeast join us, as well as Daniel Stekol, VP IRWA, Sean Sampson, Region 6 Chair, and Jenni Kriner, Reg. 6 INEC Rep. Without a doubt, the "boil" is becoming an IRWA legend and a destination of choice in October! Thanks to Buster Allen, program chair, for planning such great events like Charleston and scheduling excellent speakers for all our seminars. It has definitely been an eventful year and I look forward to 2015 to be no less exciting.

We will start the year off with our winter seminar in Columbia at The Inn at USC on February 20th. The link to register is already on the chapter 31 website (www.irwa31.com), feel free to go online and register for the Thursday night social and the Friday seminar. One of

the sessions will be on the Member Network, put on by our own Jason Bloch, so please be sure to bring your laptop, tablet, etc., so you can participate, follow along in your own Member Fuse account and learn more about the IRWA informational network.

Course 901 will be offered in Columbia as well on February 19th, so if you have been thinking about taking that course, now would be a great time to sign up! In

April, we plan to head to Durham to take in a Durham Bulls ballgame for our spring social and then out to San Diego in June for the 2015 Annual Conference. In August we are scheduled to be in Hickory, NC for our summer seminar and then by popular demand, back in Charleston, SC in October for another of Al Oswald's low country boil feasts.

2015 promises to be a fantastic year for Chapter 31! There are numerous opportunities to serve on chapter committees, with immediate openings on the professional development, environment, pipeline and transportation committees. I would encourage all our members, new and experienced, to attend the business meetings, become a member of a community of practice, serve on a chapter committee, submit speaker suggestions to our program chair, and take an educational course or two. Please get involved in our Chapter and help us continue to make it the best Chapter in the IRWA.



Julie's Unaltered Ego

See you soon,
Julie McDonald
President, Chapter 31

What's inside this Issue?

MEETING AGENDA	2
REGISTRATION INFO	3
OFFICERS	4
CHAPTER NEWS	8
UPCOMING EVENTS	7-8
RECENT PHOTOS	12



WINTER SEMINAR, COLUMBIA, SC

FEBRUARY 20th, 2015 at:

Hotel: **THE INN at USC** (Wyndham Garden)

1619 Pendleton St, Columbia, SC 29201

Room Rate: \$120.00 plus taxes Occupancy rates include Breakfast

Please book by calling **(803)779-7779**

Reservations must be made by February 4th 2015 to secure this rate.

Ask for the **IRWA** rate.

Lunch Sponsored by:

Integra Realty Resources Charlotte/Columbia

Winter Seminar Social and Networking event at

The Inn at USC

Thursday, February 19th—6:00 pm - 9:00

1619 Pendleton St. Columbia, SC 29201

Sponsored by: **Parker Poe Adams & Bernstein LLP**

Thursday Social at The INN@ USC **\$10 per person** # attending ____

Friday Seminar (including lunch) **\$30 per person** # attending ____

Name _____ Phone: _____

Company _____

Street / P.O. Box _____

City _____

Guest(s) Name(s) & Company: _____

Register online at our Chapter website: www.irwa31.com

OR mail this form along with registration fee(s) (Payable to IRWA Chapter 31)

By Thursday, January 29th to

Buster Allen

Duke Energy

PO Box 1551, NCRH 16, Raleigh, NC 27602

buster.allen@duke-energy.com, 919-546-3484



WINTER SEMINAR – FEBRUARY 19, 2015

The INN @ USC

1619 Pendleton St, Columbia, SC 29201

(803)779-7779

www.innatusc.com

Thursday, February 19

NETWORKING & HOSPITALITY

6:00p.m. – 9:00p.m.

The INN @ USC

1619 Pendleton St. Columbia, SC 29201

Sponsored by:

Parker Poe Adams & Bernstein LLP

Friday, February 20

QUARTERLY SEMINAR

Held at : **THE INN @ USC**

7:30a.m.– 8:00a.m.

Fall Seminar Registration

8:00a.m. – 8:30a.m.

Welcome/ Miscellaneous Announcements

8:30a.m. – 8:40a.m.

Break

Presentations

8:40a.m.—9:30a.m

Development of SCE&G Land

Beth Trump-SCE&G

9:40a.m. – 10:30a.m.

Member Network: To Use or Not to Use THAT is the Question!

Jason Bloch-TELICS

10:40a.m.– 11:30a.m.

Member Network

Jason Bloch-TELICS

11:40a.m. – 12:30p.m.

Real Estate Development

Bob Hughes-President Hughes Development Corp.

12:30p.m. – 1:30p.m.

LUNCH !

Sponsored by: **Integra Realty Resources Charlotte/Columbia**

1:30 p.m. – until

Chapter 31 Business Meeting

Carolinas Chapter 31

International Right of Way Association

2013-14 Leadership Directory

OFFICERS

PRESIDENT

Julie A. McDonald, PLS, PE

Telephone (704) 201-8898

Email: Julie.McDonald@cardno.com

VICE PRESIDENT

Ottis 'Buster' Allen

Telephone (336) 336/632-3708

Email: Buster.allen@duke-energy.com

TREASURER

Matt Rhoad

Telephone: (919) 821-6748

Email Mrhoad@smithlaw.com

SECRETARY

Jason Bloch

Telephone: (803) 316-7793

jbloch@telics.com

INTERNATIONAL DIRECTOR (1 YEAR)

John Yeagley

Telephone (704) 333-3373

Email: Jyeagley@chase-services.com

INTERNATIONAL DIRECTOR (2 YEAR)

Julie A. McDonald, PLS, PE

Telephone (704) 201-8898

Email: jewelsMcD@yahoo.com

Page 4

MEMBER NEWS



This news in from Bob Garrett about one of the nicest/greatest guys in the ROW profession: Please say a prayer for Reid.....

The following information is from emails from Reid Cranes son. Reid has a serious brain injury due to a ladder accident this past weekend. I know that you would like to pass this information along to the folks in Chapter 31. I will pass along any updated information that we get. I know Reid would appreciate our thoughts and prayers.

On Saturday Jan 10th Reid Crane fell from a ladder that resulted in a fractured skull and critical brain injury. He went through surgery to relieve pressure in the brain and is now in neuro-intensive care. The extent of damage to his brain is unknown at this time, and will remain unclear for weeks to come due to swelling and bruising. For now Reid remains comfortable in a constant state of sleep. Changes to his status are slow and minor thus far, such as getting to a proper body temperature and having a safe blood pressure.

1/14/2015—Reid has made it past the 72 hour mark which was a critical milestone in his care. What that means is that his swelling has maxed out and will be decreasing from here on out. The doctor and nurses have told us he is now very unlikely to sustain any secondary injuries which is a risk in the first few days after trauma. We can now focus on caring for his primary head injury. He continues to be monitored around the clock by the hospital staff in the ICU. All the news about his vital signs has been excellent including his blood pressure, temperature, heart rate and breathing. His brain continues to force this restful state in order to heal and as of now, the only medication he is on is occasional pain medication and an antibiotic. The real prognosis for his long term condition is still weeks or maybe even months away but we are thankful for the positive baby steps. Thanks again for all the continued prayers. Please understand that in order to support his need for rest, visitation is very limited.

Reid's address is:

118 Tuska Hills Drive
Holly Springs, NC 27540

**If you have news for the Carolinas' Courier
please contact:**

**Buzz Prescott SR/WA, R/W-EC
Carolina Gas Transmission
220 Operations Way
Cayce, SC 29033**

803/217-2189 - office

803/260-6138 - cell

bprescott@scana.com

The Carolinas' Courier is published quarterly.



Integra Realty Resources

Charlotte, NC • Raleigh, NC • Greensboro, NC • Charleston, SC

- Providing appraisal services for highway, utility, and rail corridor projects
- Expert witness testimony and litigation support
- Clients include state and municipal governments, along with other public agencies
- Staff of 30+ valuation professionals, including 14 MAIs

Delivering extraordinary insight and advice to our clients through a team of 900+ professionals based in 66 offices across the U.S., **Integra Realty Resources (IRR)** is the largest independent commercial real estate valuation and counseling firm in North America, now celebrating our 15th anniversary. With more than 200 MAI-designated members of the Appraisal Institute, more than any other firm, we provide **"Local Expertise...Nationally"** on a wide variety of Right-of-Way projects. Our full suite of services includes real estate appraisals, feasibility and market studies, expert testimony, and related consulting services for all property types. For more information, visit www.irr.com or blog.irr.com.

➤ **Charlotte**
 Fitzhugh L. Stout, MAI, CRE, FRICS
 T (704) 206-8254
fstout@irr.com

 John D. Scott, Jr. MAI, MRICS
 T (704) 206-8258
jscott@irr.com

➤ **Raleigh**
 Chris R. Morris, MAI, FRICS
 T (919) 847-1717
cmorris@irr.com



SOUTHEASTERN LAND COMPANY, INC.

LAND AND EASEMENT ACQUISITION SERVICES • PROJECT MANAGEMENT • CONSULTING

WE OFFER A HIGHLY TRAINED STAFF, WITH EXPERTISE IN ALL TYPES OF FEE SIMPLE AND EASEMENT ACQUISITION ON ALL LEVELS. NO MATTER WHAT TYPE OF PROJECT, UTILITY OR SCHEDULE, WE'VE GOT THE TEAM!

William F. Saunders, Jr.
President

Southeastern Land Company Office—843.248.8999
 P.O. Box 1241 Cell—843-450-1157
 Conway, SC 29528 Fax—843-248-8995
www.southeasternlandco.com Email—slcsc@aol.com

Services

- Easement acquisition
- Project management
- Cost studies
- Fee simple acquisition
- Surveys
- Title abstraction
- Appraisals
- Expert Witness Testimony

Client Types

- Utilities
- Municipal Governments
- County Governments
- State Governments
- Telecommunications
- Cable Industry

We'll help make your next project more successful. We get a lot of satisfaction out of that. Check us out on the web at southeasternlandco.com, you'll see.

MEMBERSHIP REPORT

CAROLINAS CHAPTER 31

October 1, 2014 to Janvier 15, 2015

Allover, Carolina

Total Membership as of October 1, 2014 269

New Members +10

Total Membership as of January 15, 2015 279

** Based on the most current Roster and some other odd metaphysical equations we can't comprehend.

New Members

William P. Finke	Bowman Consulting Group Charleston, SC
Patricia Roberts	Duke Energy Durham, NC
Doug L. Holley (Associate)	Contract Land Staff Ripley (believe it or not), WV
David Cribben	Duke-Energy Raleigh, NC
Eli Noel Lyons (Associate)	Summit Resources Englewood, CO
Martha Purser	Duke-Energy Rock Hill, SC
Tim J. VanGelder	McKim & Creed, Inc Raleigh (Tobacco Road), NC
Eric W. Boatwright	Santee Cooper (SCSPA) Myrtle Beach, SC
Travis Lee Avant	Compass South Appraisals Walterboro (hub of the South), SC
Steven C. Sims	Duke Energy Charlotte, N. Cakalacky

Welcome !

We look forward to having y'all in our Chapter.

Attention members and those applying for membership to Chapter 31 – Please email your membership application form to: irwaonline.org

Or—email kdkilpatrick@vaughnmelton.com for info!

**HERE ARE SOME
NUMBERS FROM
OUR TREASURER
OF WHICH YOU
MAY HAVE SOME
INTEREST**

Chapter 31 Recon- cile Report for CASH & BANK: Savings -Wells Fargo

Report created on 1/13/15

Summary

**Fiscal Year to Date (7/1/14-
1/13/15)**

Income: \$62,935.81

Expenses: \$69,332.61

NOI: (\$6,396.80)

**First Quarter (10/24/14-
1/13/15)**

Income: \$42,102.05

Expenses: \$34,265.06

NOI: \$7,836.99

**Balance Sheet (as of
1/13/15)**

Checking: \$6,113.98

Savings: \$63,332.52

Submitted by

Matt Rhoad, PB

The Education Corner

by Jane Nelson and/or MR. PDC, Bobby Deal

What We Need In 2015—Your Help!

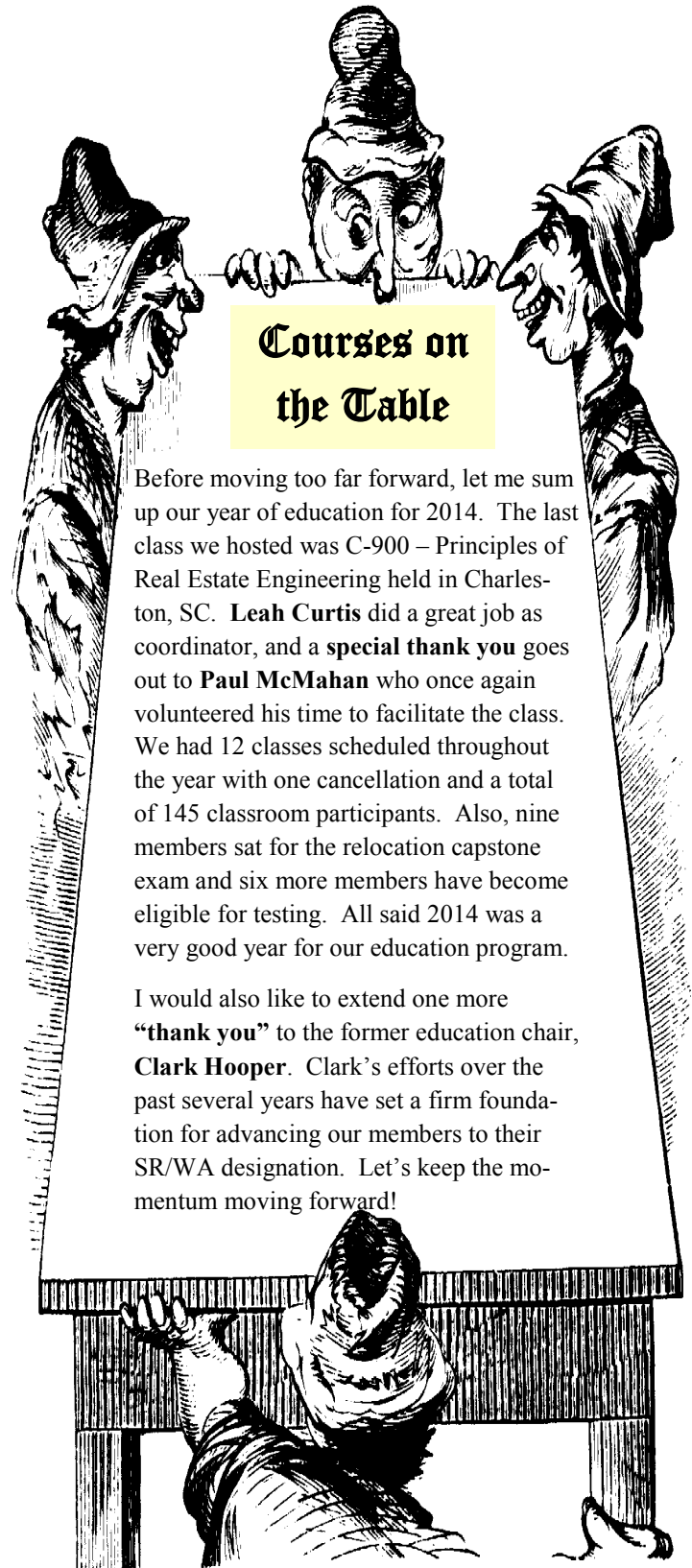
I bet working on an IRWA certification / SR/WA designation was at the top of your resolution list this year, right? If not, why not? Does the whole process send your head spinning trying to decide which path to take? Is there a class you need that is not on our proposed schedule? Do you feel like you will never be able to complete all of the requirements? (Yes, it did take me almost 10 years, but no regrets!) Well don't fret and stop procrastinating – we are here to help!!

Maybe we need to start a mentoring program, pairing up current senior members with those of you who are striving to reach that goal. Or, create a “class” of SR/WA candidates to work as a group and keep each other motivated. Most of all, we need to hear from you – how can your education committee help you meet your goals for 2015?

Speaking of mentoring, do you have a passion for talking about the work you do? Would you like to participate in promoting the right-of-way industry and help to attract young, new talent? Would you be interested in participating in a school career day for middle or high school students? If yes, I would like to hear from you!! Maybe we can reach out to a few schools this year and see how it goes. Let me know if you are interested.

So, is 2015 the year for you to obtain an IRWA certification or SR/WA designation? Are there any classes you need to finish? We currently have only four classes on the calendar so there is definitely room for more. Please contact me with any ideas, suggestions, or questions you may have and best wishes for an “educational” 2015!

Jane Nelson—Chapter 31 Education Chair
jane.nelson@hdrinc.com



Courses on the Table

Before moving too far forward, let me sum up our year of education for 2014. The last class we hosted was C-900 – Principles of Real Estate Engineering held in Charleston, SC. **Leah Curtis** did a great job as coordinator, and a **special thank you** goes out to **Paul McMahan** who once again volunteered his time to facilitate the class. We had 12 classes scheduled throughout the year with one cancellation and a total of 145 classroom participants. Also, nine members sat for the relocation capstone exam and six more members have become eligible for testing. All said 2014 was a very good year for our education program.

I would also like to extend one more “thank you” to the former education chair, **Clark Hooper**. Clark’s efforts over the past several years have set a firm foundation for advancing our members to their SR/WA designation. Let’s keep the momentum moving forward!



THE SECRETARY'S REPORT

BY Jason Bloch, Telics

CHAPTER 31

The Winter Seminar and business meeting were held on Friday, October 24th, 2014 at the Charleston Harbor Resort in Charleston, SC. The meeting was called to order by Vice-President Buster Allen at 8:11 am.

Thank you to Integra Realty Resources, TELICS, THC, and Smith Anderson Law for sponsoring the lunch and Utility Land Services and Southeastern Land Company for sponsoring the social.

Board Members Present – Julie McDonald, Buster Allen, Matt Rhoad, Jason Bloch, Tim O'Brien, Bobby Deal, Larry Wright, Jane Nelson, Glenn Winfree, John Yeagley, Buzz Prescott, John Horne and Paul Thompson.

The minutes from the Summer meeting held August 22nd in Charlotte were approved.

OLD BUSINESS

The Chapter will begin recognizing members who are candidates for or obtain credentials.

Motion was approved to charge more at the door for late registrants: \$5 for social events and \$10 for seminars.

NEW BUSINESS

The Chapter started a discussion on what it would involve to host the 2021 Annual Conference in Charlotte. The basic discussion points were:

Need to submit by 2016 for 2021 conference.

Should need under \$10k to submit and run for the bid.

International will help negotiate room rates, etc.

Should shoot for 120 volunteers.

An ad hoc work group was created to determine what committees we should have going forward and will report back at the next meeting.

Donna Finders won the free membership drawing. Congratulations Donna!

Respectfully submitted,

Jason Bloch
Secretary, IRWA Carolinas Chapter 31

• **Editor's note—**

This month Jason Bloch, Illustrious Chapter Secretary (or should we call him Administrative Assistant?) has mercifully shortened his report so it will fit in the space allowed. At the meeting in Feb. let's all stand and give him a rousing round of applause..... using only one hand.....

What North Dakota Would Look Like if Its Oil Drilling Lines Were Aboveground

By GREGOR AISCH NOV. 25, 2014

More than 11,000 oil wells have been drilled in North Dakota since 2006, covering the state's agricultural landscape. In all, almost 40,000 miles of well bores have been drilled underground to connect the fracking operations to surface wells. Laid end to end, they would circle the Earth about one and a half times.

On Sunday, The New York Times published a [months long investigation](#) by Deborah Sontag and Robert Gebeloff into North Dakota's conflicted relationship with its booming oil industry. In the process of reporting that article, we obtained the locations of every oil drilling line of every well in the state.

The precise depths and directions of these remain out of sight for a very obvious reason: The drilling lines are underground. Here, we change that.

The illustrations shown on page 13 are accurate in every respect except one: We changed the vertical direction of each oil well bore to go above ground instead of below it. Otherwise, every bore line is shown precisely how it's described by North Dakota's Department of Mineral Resources.

It's an experiment that may depict the scale of a topic better than reality can.

Email thoughts and comments to: Glenn.Winfree@Duke-Energy.com (NOW, go to page 13)



telics.com
888.350.8933

Established in 1981 with INTEGRITY as our cornerstone, TELICS is committed to FAIRNESS and project EXCELLENCE for our clients.

RIGHT OF WAY & RELOCATION

- Acquisition Negotiation
- Relocation Assistance
- Project Management
- Prior Rights Research
- Records Research
- EIS Studies

APPRAISAL SERVICES

- Right of Way & Utility Easement Appraisals
- Proximity Studies
- Public Works & Transportation Project Cost Estimates
- Expert Testimony
- Feasibility Studies
- Pre-Acquisition & Surplus Property Appraisals

ADDITIONAL CAPABILITIES

Design, Staffing, Permitting, CADD / GPS / GIS, Special Projects, Utility Coordination, Emergency Response, Traffic Signal Cabling, Pole Inspection and Maintenance

**Don't forget! We're
on the web too @
www.IRWA31.com**



1/2 page - \$150

3/4 page - \$200

Whole page - \$250

ADVERTISEMENTS

There, we said it. Our newsletter committee has been working feverishly getting this issue out for your inquiring minds. We have some ads in this issue. Along the way, you've seen some advertisements from some of the folks you've met at meetings. Their companies have joined the IRWA in hopes of making business connections, but also making new friends. So, in order to further that, we're happy to help out with some ADVERTISEMENTS.....and, we believe them to be decently inexpensive. So, dig down a bit and put your name or company name (camera ready of course) in print.

One more thing—these rates are per issue; capisce?

Got pictures of IRWA interest?
We can use them. Send them to:
bprescott@scana.com

1/4 page—\$75.00

THANKS TO ALL OF OUR ADVERTISERS.

Y'ALL ARE MAKING THE NEW ISSUES LOOK

GREAT !

1/8 page - \$40

New areas of studies topics for **clemmons** fans:

How to count up the SC score without taking your shoes off in public. (hint, they still can't do it.)

How many teeth does it take to eat corn on the cob at Clemmons? Film at 11. Don't miss this one. Starring Jim-Bob Dabo and his porcine queen.

How much yardage can a one-legged QB gain running? How does that work out in tillable hectares? Will he be scarred for life?



**THIS SPACE
FOR RENT! (cheap)**

Winter Seminar Hotel



[The INN@USC on the campus of USC](#)

1619 Pendleton Street

Columbia, South Carolina 29201

803-779-7779

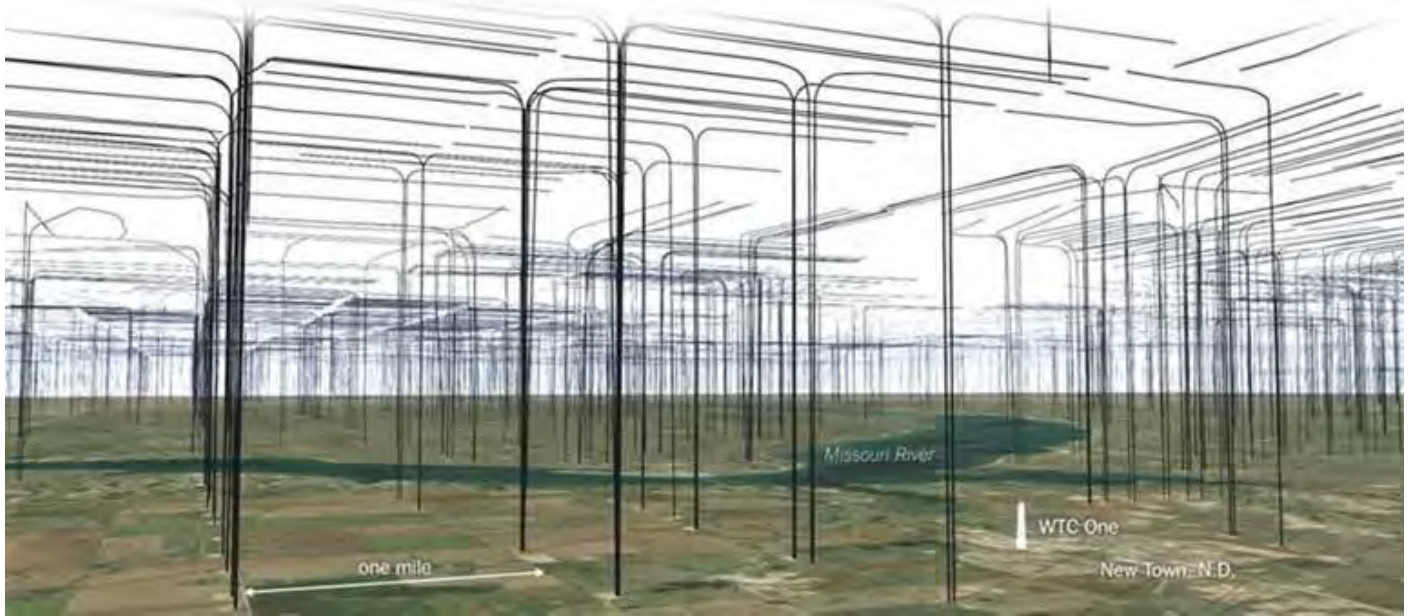
Room rate is \$120 plus tax. That includes a full HOT, cooked to order breakfast, free internet and free parking.

Social will be held at the hotel on Thursday evening.

Course 901 will be taught in Columbia at the hotel so those attending the class book your room for Wednesday night. A 24 hour cancellation policy is in place for individual reservations . Failure to give proper notice will result in first night room rate being charged to the guest.

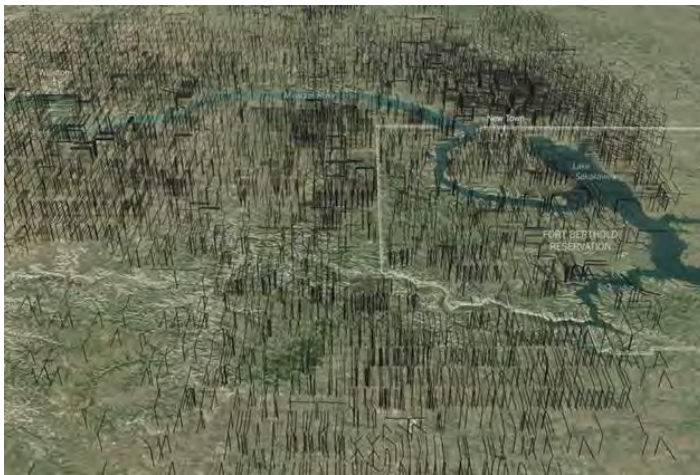
If you have questions email: buster.allen@duke-energy.com

More than 11,000 oil wells have been drilled in N. Dakota since 2006. If you turned them upside down sticking out of the ground, this is what they'd look like. Weird, eh? The wells are roughly 2 miles deep and a mile or so long.

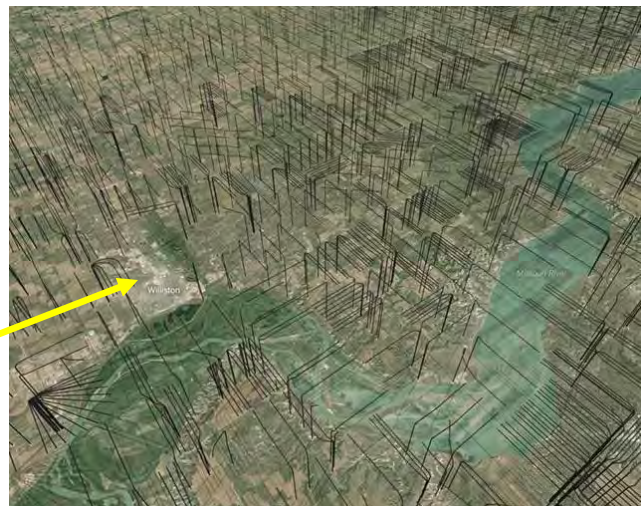


A closer view of the northwestern part of the state shows the concentration of oil wells alongside the Missouri River and in Fort Berthold, a Native American reservation around Lake Sakakawea.

To see these pictures better, try blowing up the PDF page to 150 or 200%.



Williston, the sixth-largest city in North Dakota, is surrounded by oil fields. It's home to many of the workers who have moved to the state to get the wells flowing.



The town of Williston, ND